



GATA-3 (phospho Ser308) Polyclonal Antibody

Catalog No	YP-Ab-01434
Isotype	IgG
Reactivity	Human;Mouse
Applications	WB;IF;ELISA
Gene Name	GATA3
Protein Name	Trans-acting T-cell-specific transcription factor GATA-3
Immunogen	The antiserum was produced against synthesized peptide derived from human GATA3 around the phosphorylation site of Ser308. AA range:274-323
Specificity	Phospho-GATA-3 (S308) Polyclonal Antibody detects endogenous levels of GATA-3 protein only when phosphorylated at S308.
Formulation	Liquid in PBS containing 50% glycerol, 0.5% BSA and 0.02% sodium azide.
Source	Polyclonal, Rabbit,IgG
Purification	The antibody was affinity-purified from rabbit antiserum by affinity-chromatography using epitope-specific immunogen.
Dilution	Immunofluorescence: 1/200 - 1/1000. ELISA: 1/10000. Not yet tested in other applications.
Concentration	1 mg/ml
Purity	≥90%
Storage Stability	-20°C/1 year
Synonyms	GATA3; Trans-acting T-cell-specific transcription factor GATA-3; GATA-binding factor 3
Observed Band	
Cell Pathway	Nucleus.
Tissue Specificity	T-cells and endothelial cells.
Function	disease:Defects in GATA3 are the cause of hypoparathyroidism with sensorineural deafness and renal dysplasia (HDR) [MIM:146255]; also known as Barakat syndrome.,function:Transcriptional activator which binds to the enhancer of the T-cell receptor alpha and delta genes. Binds to the consensus sequence 5'-AGATAG-3',similarity:Contains 2 GATA-type zinc fingers.,tissue specificity:T-cells and endothelial cells.,
Background	This gene encodes a protein which belongs to the GATA family of transcription factors. The protein contains two GATA-type zinc fingers and is an important regulator of T-cell development and plays an important role in endothelial cell biology. Defects in this gene are the cause of hypoparathyroidism with sensorineural deafness and renal dysplasia. [provided by RefSeq, Nov 2009],



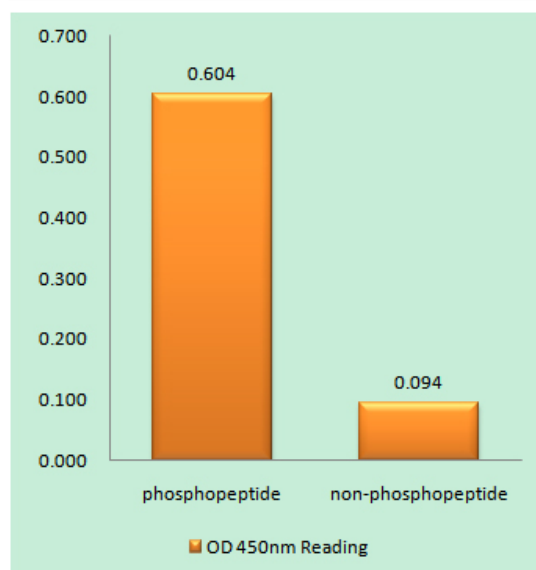
matters needing attention

Avoid repeated freezing and thawing!

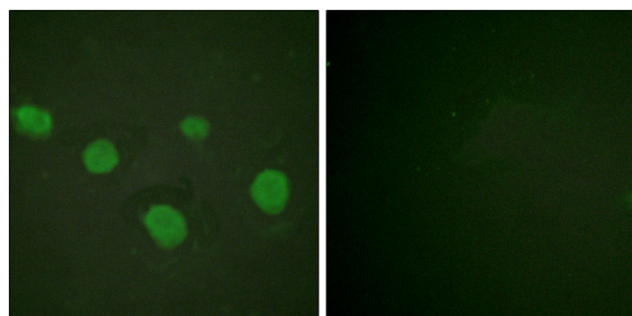
Usage suggestions

This product can be used in immunological reaction related experiments. For more information, please consult technical personnel.

Products Images



Enzyme-Linked Immunosorbent Assay (Phospho-ELISA) for Immunogen Phosphopeptide (Phospho-left) and Non-Phosphopeptide (Phospho-right), using GATA3 (Phospho-Ser308) Antibody



Immunofluorescence analysis of HUVEC cells, using GATA3 (Phospho-Ser308) Antibody. The picture on the right is blocked with the phospho peptide.